



BOEM BUREAU OF OCEAN
ENERGY MANAGEMENT

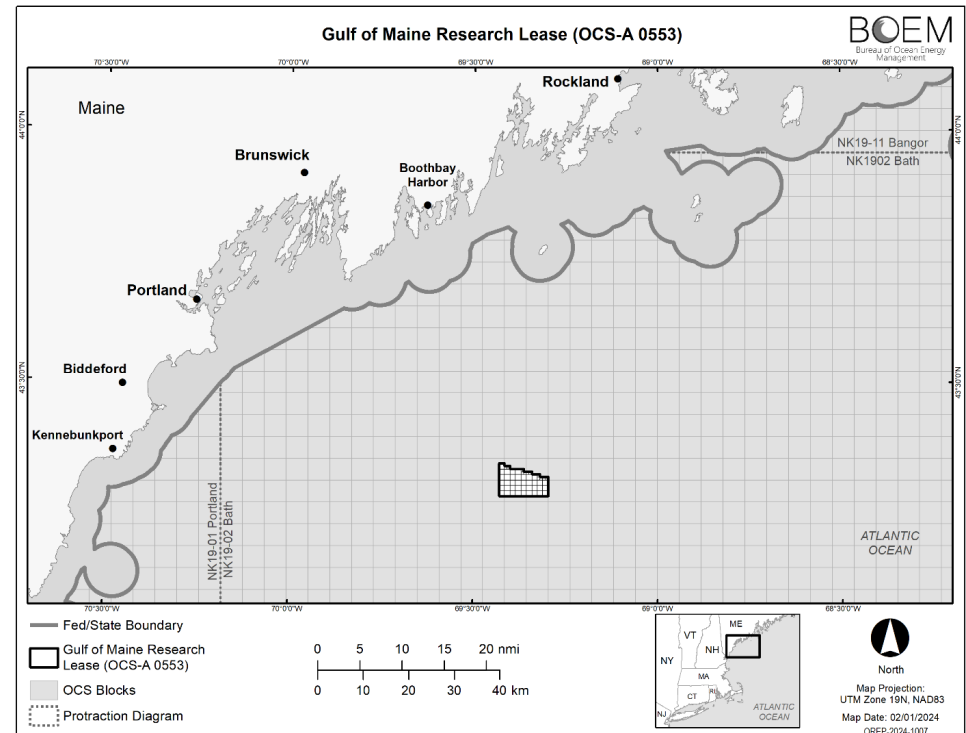
Maine Research Lease

Maine Offshore Wind Research Array Informational Webinar

Luke Feinberg, Renewable Energy Program Specialist

Research Lease Location

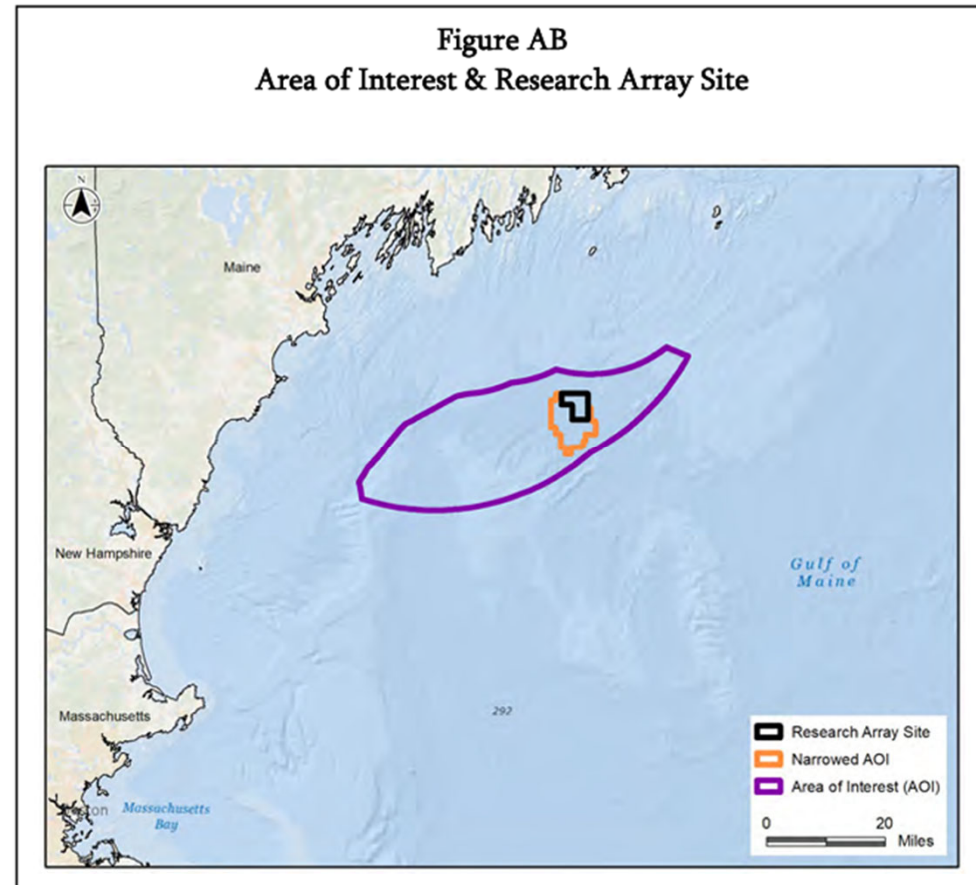
- Area selected represents the most deconflicted area in the RFCI that would facilitate the goals of the Research Lease
- How did we get here?



State Request



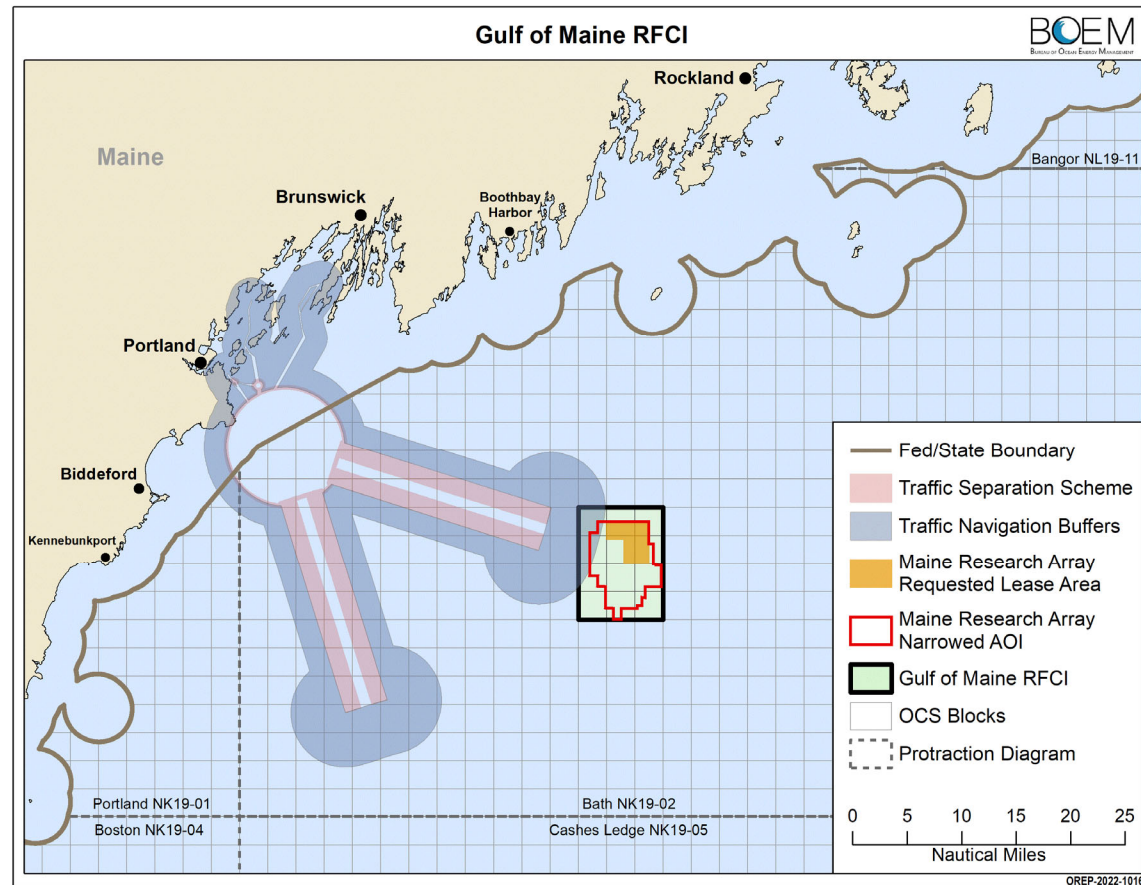
- Oct. 2021 Research Lease Application proposed the Requested Lease Area
- Collaborative spatial process outlined in the application identified ~9,700 acres as the Maine Research Array Requested Lease Area (BLACK)



Request for Competitive Interest



- August 19, 2022 – Request for Competitive Interest (RFCI) issued by BOEM
 - Area enlarged to account for use conflicts
 - Public comment
- March 20, 2023 – Determination of No Competitive Interest in the RFCI is published enabling leasing negotiations to begin



Site Review



- Review of the requested area for the research lease identified significant navigational conflict with the USCG Port Access Route Study: Approaches to Maine, New Hampshire, and Massachusetts (88 FR 20547) (April 6, 2023)

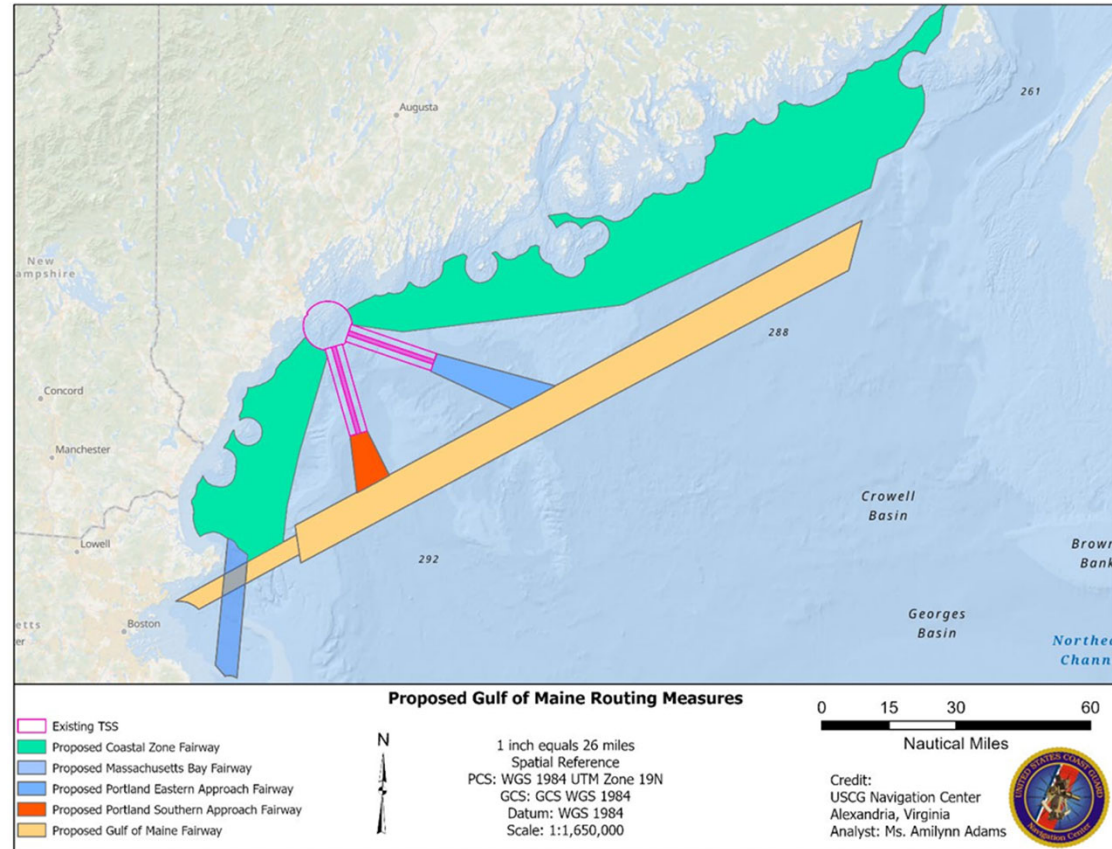
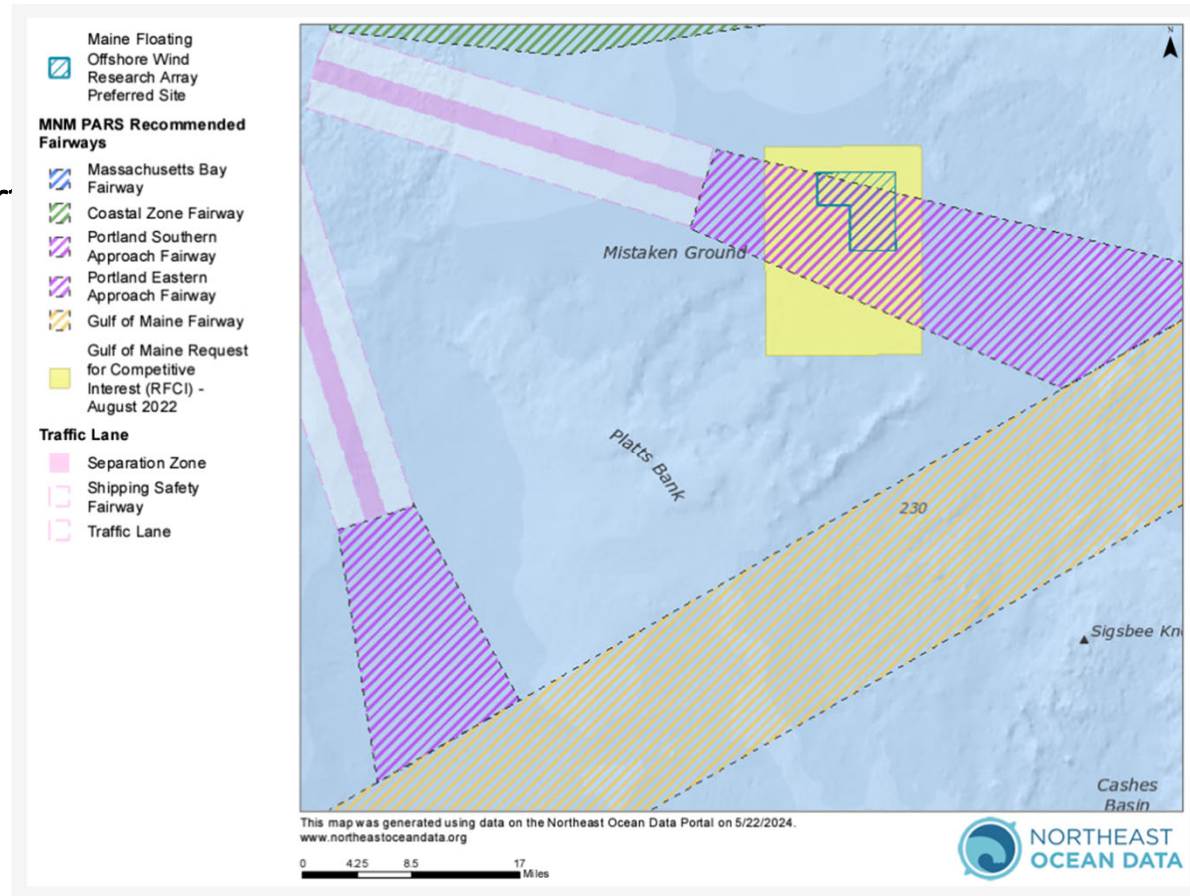


Figure 1-MNMPARS Recommended Fairways

Site Review



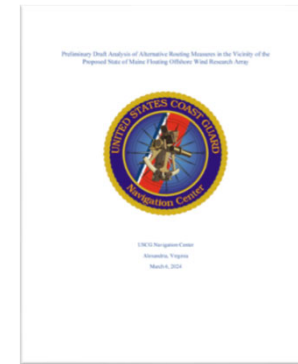
- Review of the requested area for the research lease identified significant navigational conflict with the USCG Port Access Route Study: Approaches to Maine, New Hampshire, and Massachusetts (88 FR 20547)



Modeling



- Two modeling efforts
 - USCG Preliminary Draft Analysis of Alternative Routing Measures in the Vicinity of the Proposed State of Maine Floating Offshore Wind Research Array¹
 - BOEM partnership with NCCOS

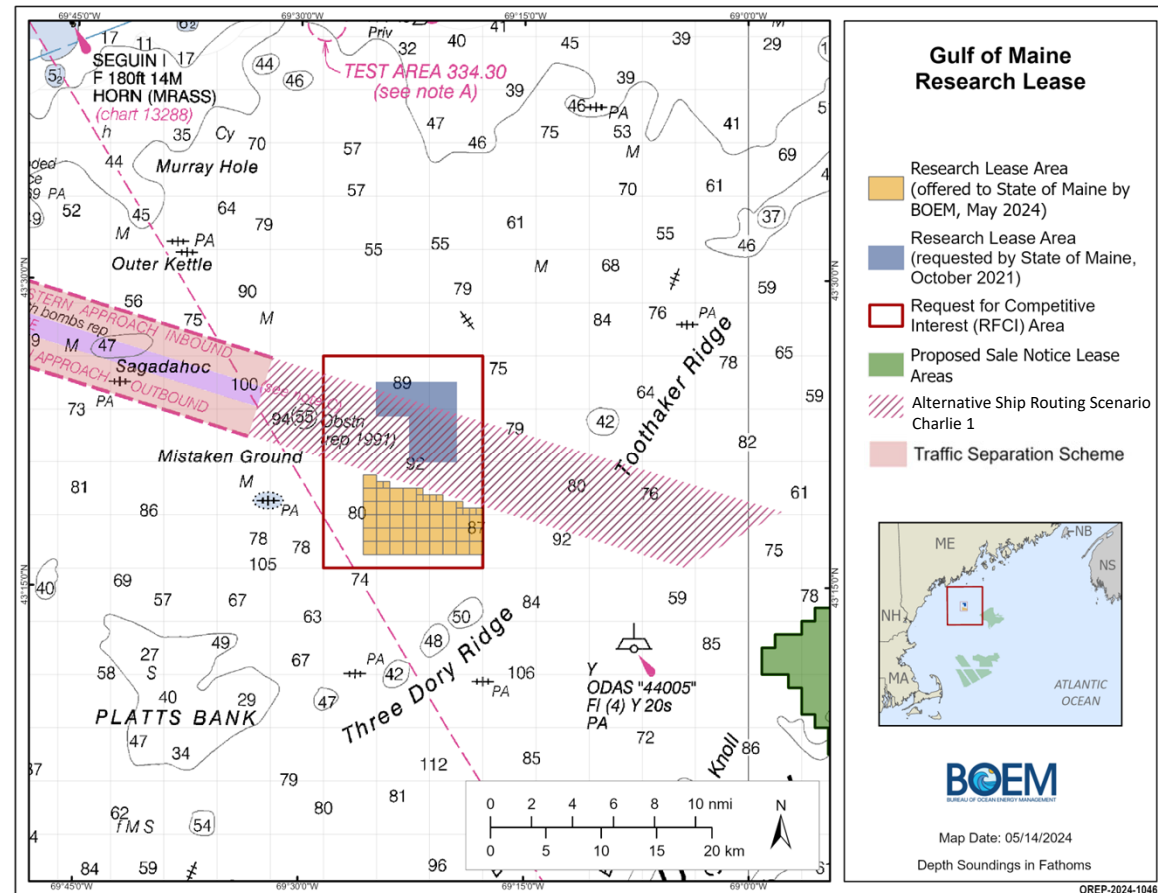


1. [Preliminary Draft Analysis of Alternative Routing Measures Near Proposed State of Maine Research Array.pdf \(uscg.gov\)](https://www.uscg.gov/Portals/0/PDFs/2016_11/Preliminary_Draft_Analysis_of_Alternative_Routing_Measures_Near_Proposed_State_of_Maine_Research_Array.pdf)

Lease Area



- Given the constraints in the area, USCG, the State and Maine and BOEM identified a location for the research lease area (**ORANGE**) that aligns with the Alternative Ship Routing Scenario Charlie 1 which represented the least amount of risk
- USCG has not designated fairways in the Gulf of Maine.
- 15,000 acres; 32.2 statute miles or 28.0 nm from mainland.
 - More acres than requested to account for:
 - Additional site survey
 - deconfliction
 - Lessee limited to a 9,700 acre project (original request)



Maine Research Lease: Lease Stipulations

Similar structure to commercial leases, but what stipulations are different?

- **Navigational Safety** – Lessee may not include in their RAP any portion of the leased area that overlaps with any proposed or officially designated traffic measures implemented by the USCG
- **Research Framework** – requirement to outline how the lessee will implement the research framework outlined in original application. Data from research to be made **public**
- Reporting required on research progress every **6 months**
- Project proposed is limited to **9,700 acres**, not the whole lease area

UNITED STATES
DEPARTMENT OF THE INTERIOR
BUREAU OF OCEAN ENERGY
MANAGEMENT

**RESEARCH LEASE OF SUBMERGED
LANDS FOR RENEWABLE ENERGY
ACTIVITIES ON THE OUTER
CONTINENTAL SHELF**

Paperwork Reduction Act of 1995 statement: This form does not constitute an information collection as defined by 44 U.S.C. § 3501 et seq. and therefore does not require approval by the Office of Management and Budget.

Maine Research Lease: Goals and Opportunity

- Research leases must support the future production, transportation, or transmission of renewable energy
- **No** fees or payments as research is expected to benefit the public
- The Research Lease is expected to continue to **inform the commercial process**. Dialogue to date has:
 - Increased awareness of offshore wind
 - Identified opportunities and challenges

