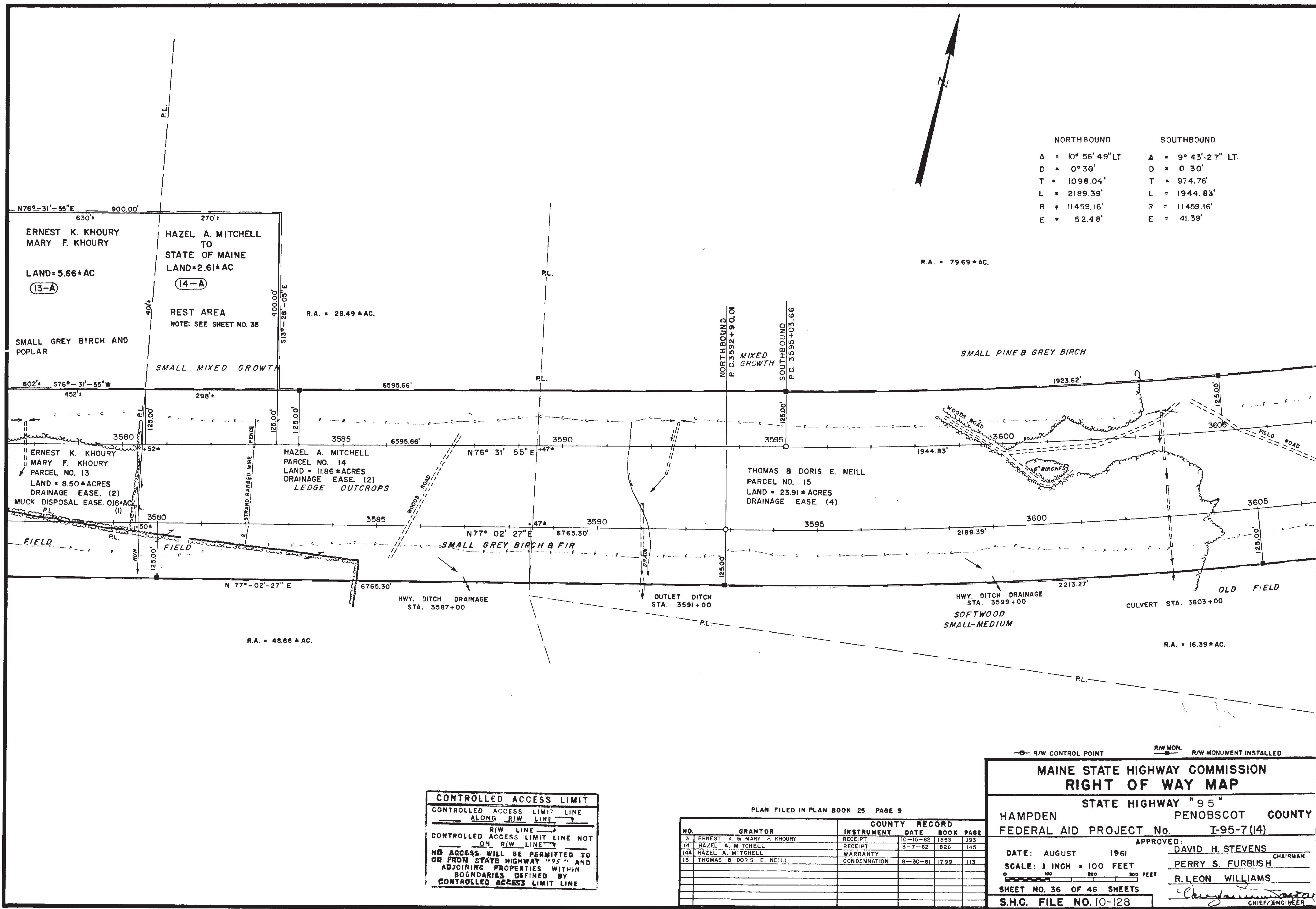


NO.	DATE	DESCRIPTION	BY
1	11/10/66	Revised Curves, or Acres at Sta.	P.V.H.
2			
3			
4			
5			

ITEM	FIGURED	PLOTTED	CHECKED
BASE LINE	A.J.H.	A.J.H.	
TOPOGRAPHY	A.J.H.	A.J.H.	
R/W LINES	A.G.	A.G.	
AREAS	A.G.	A.G.	
R/W MON.	A.G.	A.G.	
CO. RECORD			



NORTHBOUND	SOUTHBOUND
Δ = 10° 56' 49" LT	Δ = 9° 43' 27" LT.
D = 0° 30'	D = 0° 30'
T = 1098.04'	T = 974.76'
L = 2189.39'	L = 1944.83'
R = 11459.16'	R = 11459.16'
E = 52.48'	E = 41.39'

CONTROLLED ACCESS LIMIT
CONTROLLED ACCESS LIMIT LINE
ALONG R/W LINE
R/W LINE
CONTROLLED ACCESS LIMIT LINE NOT
ON R/W LINE
NO ACCESS WILL BE PERMITTED TO
OR FROM STATE HIGHWAY "95" AND
ADJOINING PROPERTIES WITHIN
BOUNDARIES DEFINED BY
CONTROLLED ACCESS LIMIT LINE

NO.	GRANTOR	INSTRUMENT	DATE	BOOK	PAGE
13	ERNEST K. & MARY F. KHOURY	RECEIPT	10-15-62	1863	193
14	HAZEL A. MITCHELL	RECEIPT	3-7-62	1826	145
14A	HAZEL A. MITCHELL	WARRANTY			
15	THOMAS & DORIS E. NEILL	CONDEMNATION	8-30-61	1799	113

MAINE STATE HIGHWAY COMMISSION
RIGHT OF WAY MAP

STATE HIGHWAY "95"

HAMPDEN PENOBSCOT COUNTY

FEDERAL AID PROJECT No. I-95-7(14)

APPROVED: DAVID H. STEVENS CHAIRMAN

DATE: AUGUST 1961

SCALE: 1 INCH = 100 FEET

PERRY S. FURBUSH

R. LEON WILLIAMS

SHEET NO. 36 OF 46 SHEETS

S.H.C. FILE NO. 10-128