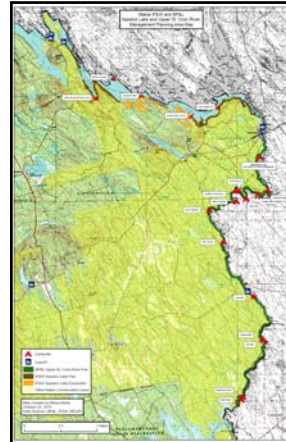


Spednic Lake & Upper St. Croix River Corridor Management Plan

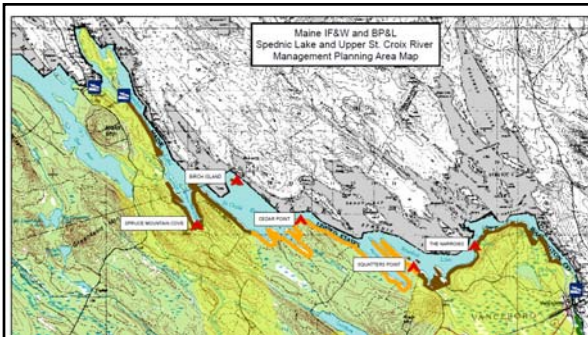


Public Scoping Meeting
October 27, 2010
Vanceboro Elementary School

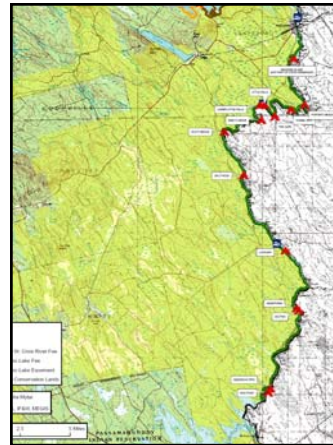


Planning Area

- 51 miles (2,773 acres) of shorefront and islands within Maine's Spednic Lake/Upper St. Croix River corridor to be maintained for their exceptional undeveloped character and backcountry recreational values, which are of state and international significance.
- Lands on Spednic Lake were acquired by the Maine Department of Inland Fisheries & Wildlife and lands on the St. Croix River were acquired by the Maine Department of Conservation.



Spednic Lake

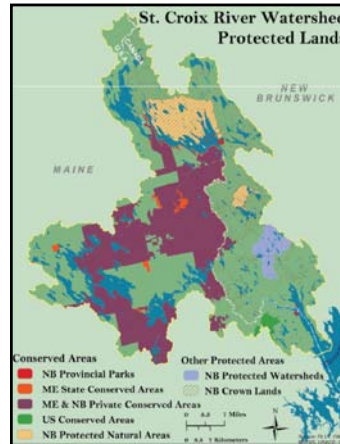


Upper
St. Croix River



Regional
Context:
St. Croix River
Watershed

Source: St. Croix: State of the Watershed Report, 2008



Regional
Context:
Conserved
Lands

Source: St. Croix: State of the Watershed Report, 2008

Planning Context:
Conserved Lands, Public Access, and Management Agreements

- 1986: Both Maine and New Brunswick sign a memorandum of understanding to jointly protect and manage the St. Croix boundary corridor.
- 1993: By Executive Order, the Maine and New Brunswick governments adopted a long-term plan for the St. Croix waterway that sets a policy to provide permanent protection of the Spednic and upper St. Croix River area.
- 2003: A 51-mile conservation corridor along Spednic Lake and the Upper St. Croix River was acquired by the State of Maine.
- 2005: In addition, the 311,684-acre Sunrise Easement was permanently protected by the Downeast Lakes Forestry Partnership. The State of Maine holds a Public Access Easement providing access to the easement lands and the St. Croix River corridor.
- 2010: BP&L, IF&W, WWLT and SCIWC sign Memorandum of Understanding for delivery of a Stewardship Endowment Fund for certain conservation and recreation lands.

Planning Context:
Plan for Long-term Cooperative Management of the St. Croix International Waterway



Planning Context:
Existing Recreation Surveys

1999 Recreational Use Assessment of the St. Croix International Waterway: An overview of recreational user characteristics and perspectives. By Cynthia Stacey, UNB and John Daigle, UMO.



Planning Context - What's in a Plan?

- Focused, single-country resource and recreational management planning in order to:
 - retain a high quality backcountry experience
 - maintain efficiencies in recreation management
 - protect the undeveloped character and natural resources of this outstanding corridor
- The plan will:
 - Identify a long-range vision for recreational development along Maine's side of the waterway.
 - Identify recreational needs and issues
 - Assess suitable sites and develop guidelines for future recreation development
 - Outline options for addressing border issues
 - Make recommendations for future recreation management
 - Provide guidance for use of a new "Stewardship" endowment fund created by the New England Forestry Foundation.
- 15 year timeframe



Planning Context – The Process

- Staff site visits, research and meetings
- **Public Scoping Meeting**
- Continued outreach to key stakeholders
- Draft Plan available in early 2011 – to be presented at public meeting followed by two week public comment period
- Draft Plan revised and Final Plan prepared
- Final Plan adopted by BP&L and IF&W in Spring 2011.

Recreation Resources

There are 21 campsites, 2 access points and 2 portages within the planning corridor.

In addition, there are several nearby access points and portages that are important for accessing the planning corridor.

SITE	OWNER	TYPE
Beech Island Campsite	Inland Fisheries & Wildlife	Campsite
Spruce Mountain Cove Campsite	Inland Fisheries & Wildlife	Campsite
Cedar Point Campsite	Inland Fisheries & Wildlife	Campsite
Squawher's Point Campsite	Inland Fisheries & Wildlife	Campsite
The Narrows Campsite	Inland Fisheries & Wildlife	Campsite
Parlier's Meadow Campsite	Bureau of Parks & Lands	Campsite
Tunnel Rips Campsite	Bureau of Parks & Lands	Campsite
The Cape Campsite	Bureau of Parks & Lands	Campsite
Little Falls 1 Campsite	Bureau of Parks & Lands	Campsite
Little Falls 2 Campsite	Bureau of Parks & Lands	Campsite
Little Falls Portage	Bureau of Parks & Lands	Portage
Lower Little Falls Campsite	Bureau of Parks & Lands	Campsite
Baby's Grave Campsite	Bureau of Parks & Lands	Campsite
Scott Brook Campsite	Bureau of Parks & Lands	Campsite
Split Rock 1 Campsite	Bureau of Parks & Lands	Campsite
Split Rock 2 Campsite	Bureau of Parks & Lands	Campsite
Loon Bay Launch	Bureau of Parks & Lands	Access
Loon Bay 1 Campsite	Bureau of Parks & Lands	Campsite
Loon Bay 2 Campsite	Bureau of Parks & Lands	Campsite
Canoeport Portage	Bureau of Parks & Lands	Portage
Annapurna Campsite	Bureau of Parks & Lands	Campsite
Skutnik Campsite	Bureau of Parks & Lands	Campsite
Kendrick Rips Campsite	Bureau of Parks & Lands	Campsite
Egg Point Campsite	Bureau of Parks & Lands	Campsite

**Recreation Resources –
Spednic Lake Access**



- Forest City Launch
- Castle Road Launch
- Vanceboro Launch

**Recreation Resources –
Spednic Lake Campsites**

- Birch Island
- Spruce Mountain Cove
- Cedar Point
- Squatter’s Point
- The Narrows



**Recreation Resources –
Upper St. Croix Access**

- Vanceboro
- Little Falls
- Loon Bay
- Grand Falls Flowage



**Recreation Resources –
Upper St. Croix River Campsites**

- Porter’s Meadows
- Tunnel Rips
- The Cape
- Little Falls (2)
- Lower Little Falls
- Baby’s Grave
- Scott Brook
- Split Rock (2)
- Loon Bay (2)
- Annapurna
- Skutnik
- Kendrick Rips
- Egg Point

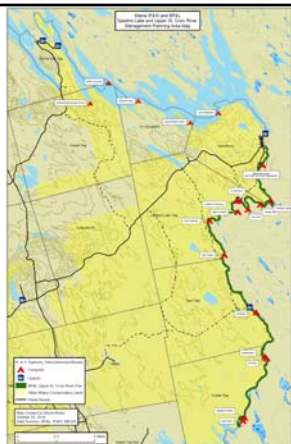


Related Management Issues:

Vehicular Access

Public roads provide vehicular access to Forest City and Vanceboro.

In addition, private roads provide important deeded vehicular access to Little Falls and Loon Bay.



Related Management Issues:
International Border

- Increased enforcement by the US Border Patrol of remote border entries, beginning in 2009, which has complicated the longstanding practice of recreationists accessing campsites on both the Maine and New Brunswick sides of the St. Croix waterway.
- A “shortage” of campsites has resulted in congestion on the U.S. side and has begun to degrade the sites and the recreation experiences.

Related Management Issues:

Water levels

Management of Forest City and Vanceboro dams controls Spednic Lake levels and upper river flows that significantly impact recreational use.

What are we asking for tonight?

Help create a long-range vision for recreational development along Maine's side of the waterway.
Give us feedback about existing recreation facilities – are existing facilities appropriate and sufficient based on your vision for the waterway, recreational use, and border enforcement?
Share concerns/suggestions about any issues relating to the management of these Maine lands.

Direct questions and comments to:

Misha Mytar
Management Plan Coordinator
PO Box 343
Sullivan, ME 04664
misha.mytar@maine.gov
(207) 460-4818



Mark A. Caron, Regional Wildlife Biologist
Department of Inland Fisheries & Wildlife
73 Cobb Road
Enfield, ME 04493
(207) 732-4132, ext 4008
mark.caron@maine.gov

